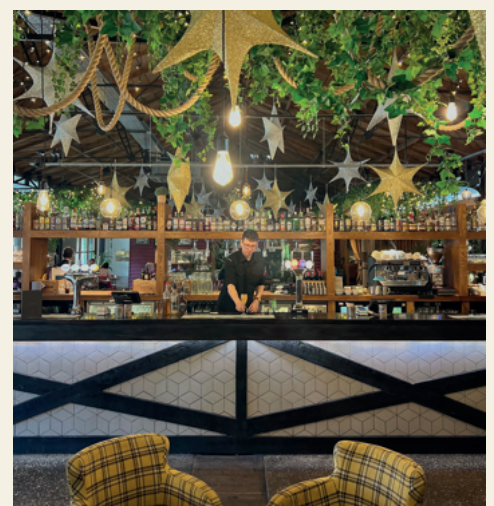




harbour house



Your Perfect Christmas Party Venue For Parties Whatever The Size





harbour house



Introduction

Harbour House is an all day venue, for every occasion. A waterfront restaurant, bar and terrace set amongst a magnificent backdrop of original features in one of last remaining 19th century transit sheds in the Southwest.

We are already taking bookings for Christmas 2024 and we can't wait to celebrate with you at Harbour House and enjoy the festivities in one of Bristol's most unique waterside venues.

Our festive menu showcases some of our amazing local suppliers and their produce. Whether you are organising the work due, meeting up with the family or catching up with friends here at Harbour House we want to make your Christmas extra special.

Christmas Menus

Experience all the indulgence of Christmas with our three set course menu and our festive canapés.

We also have a variety of drinks packages to get your Christmas party started!

Please click on the following links for our sample menus.

[Christmas Set Menu](#)

[Christmas Canapés Menu](#)

[Drinks Packages](#)

Please click here for our booking terms

Useful Info

Located in the heart of Bristol, boasting excellent transport links to the M4 and M5 motorways and with Bristol Temple Meads just a ten minute walk away. Below are some useful features -

- ✓ Nearby Parking
- ✓ Front Door Drop off
- ✓ Nearby Train Station
- ✓ Wheelchair access
- ✓ Central location
- ✓ Dog friendly
- ✓ Voi Scooters
- ✓ Baby changing

Our Spaces

Dining Room

The restaurant sets the scene for a more intimate celebration with the space to seat parties of 10 - 100. With Christmas set and sharing menus starting from £36 per head showcasing their 'Best of the Southwest' suppliers and produce. This area can be transformed into an energetic, partying paradise for private events with space for a dance floor, live bands and DJ's.

The Bar

The bar area, recently crowned 'Best Bar' at the 2023 Bristol Life Awards, is ideal for that sociable gathering with room to stand and seat for up to 80+ guests plus access to our waterfront terrace. With our Festive Canapés Menu, it's the idyllic place for smaller groups and informal parties.

Winter Waterfront Terrace

Our heated and covered waterfront terrace boasts one of the best waterfront views in Bristol. With a capacity of 80, you and your guests will be able to enjoy this unique space for your Christmas event, whether it is a small celebration or a full terrace takeover.

Exclusive Hire

Harbour House is an all day venue, for every occasion. Our unique venue is perfect for a full take-over which includes our restaurant area, bar and waterfront terrace.

With a capacity of 200, we can cater for your big Christmas party.

Contact

Our experienced events team look forward to working every step of the way with you to make sure we deliver excellence throughout with a personal touch.

Address - The Grove, Bristol, BS

Email - enquiries@hhbristol.com

Telephone - 0117 925 1212

Website - hhbristol.com